




Smaller FOV scan tiny objects  
with better resolution

# THE ONLY DUAL FOV WHITE LIGHT 3D SCANNER IN THE WORLD



Larger FOV scan big objects  
fluently and efficiently

# THUNK3D HANDHELD 3D SCANNER



2020



2019



2018

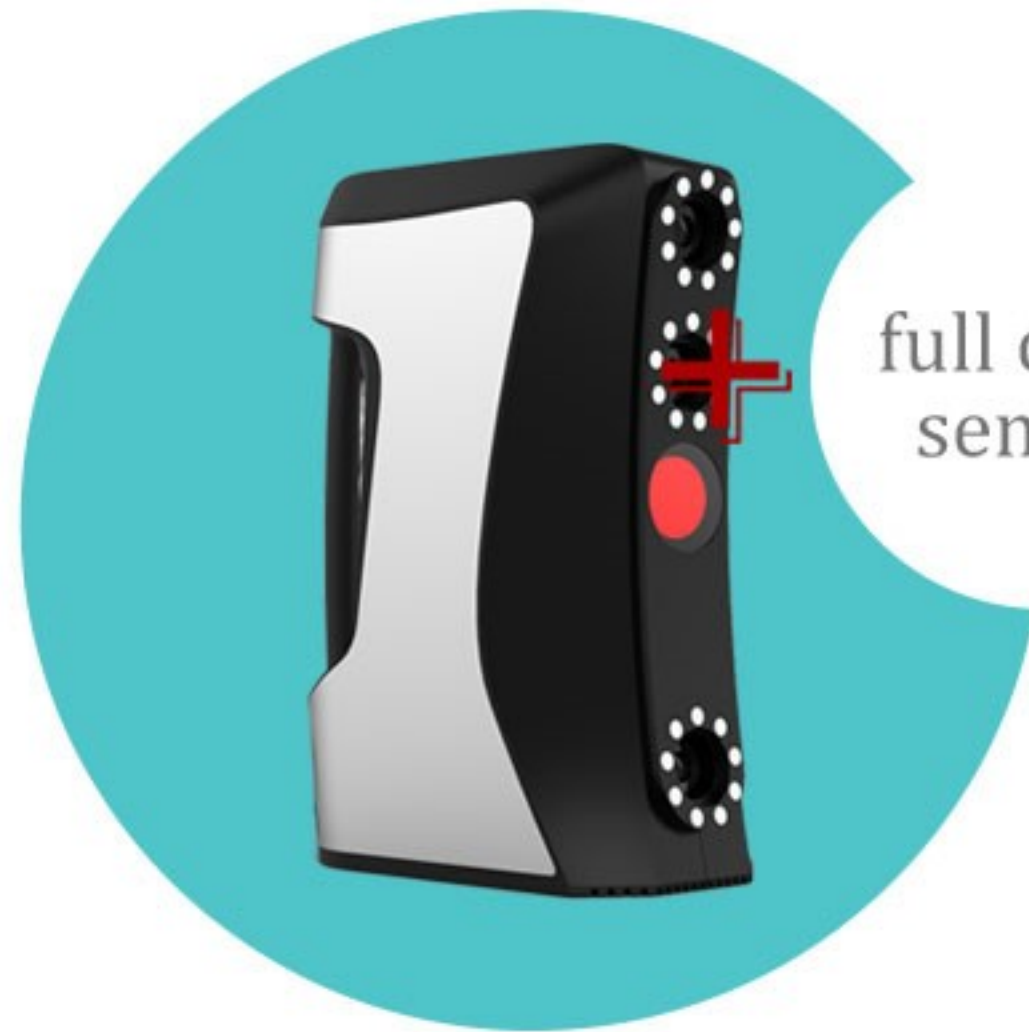


2017



Fisher

Monochrome sensor\*2



full color  
sensor

Archer

Monochrome sensor \*2

Full color sensor \* 1

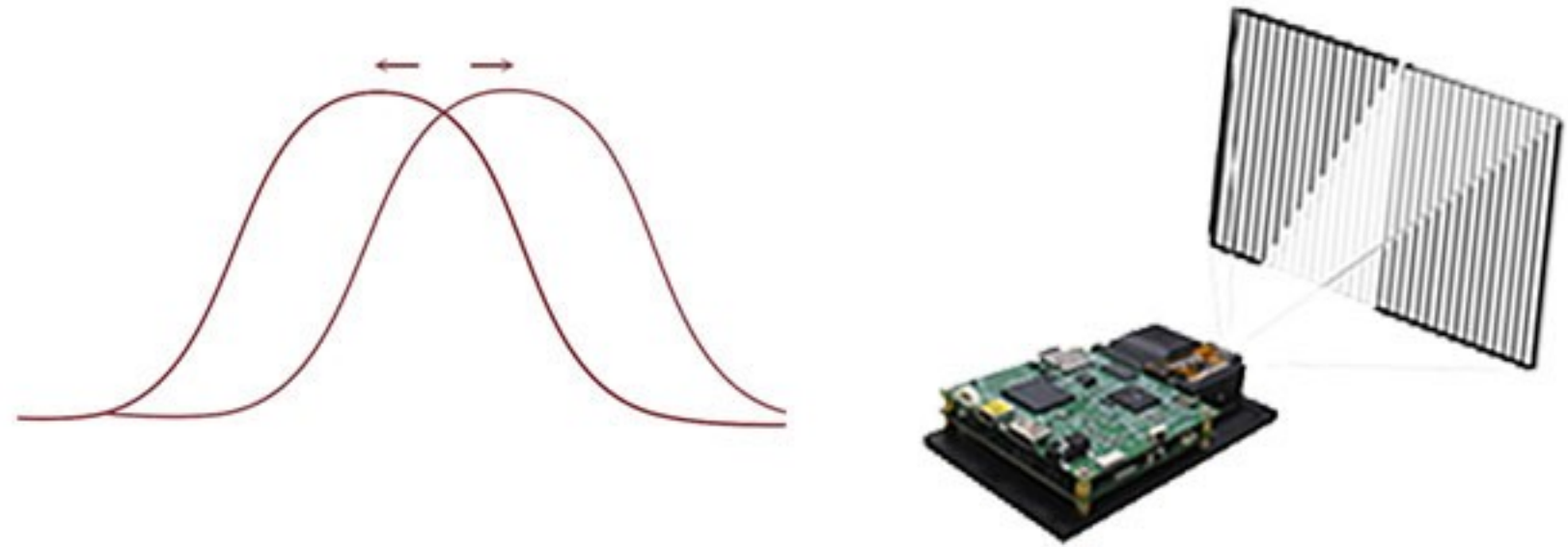


Fisher Pro

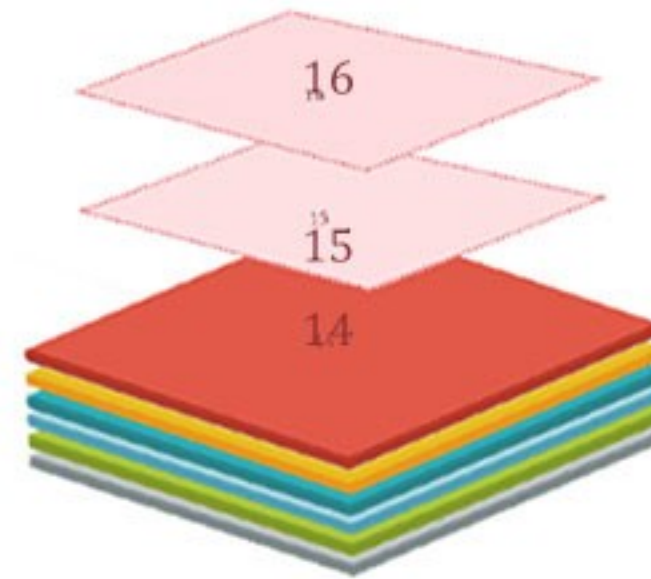
Monochrome sensor \* 2

Photogrammetry sensor \* 1

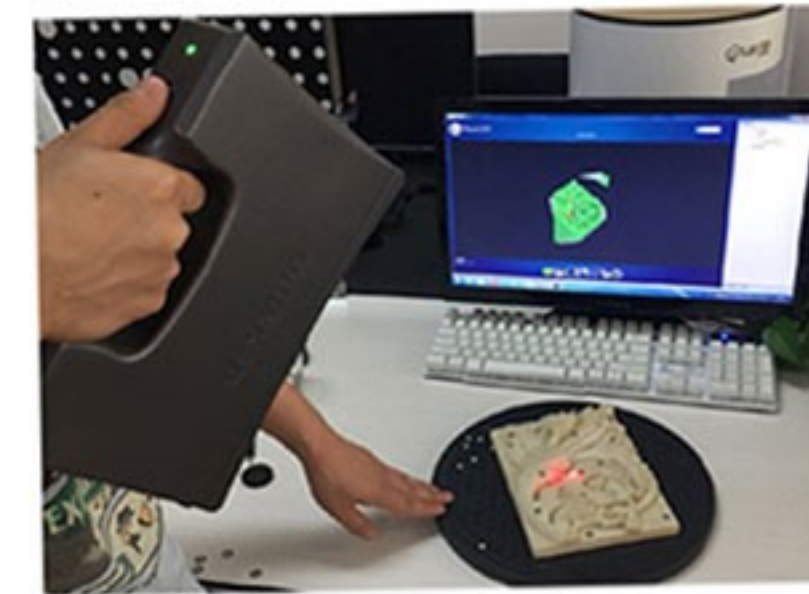
# SURFACE STRUCTURED LIGHT TECHNOLOGY



Phase shifting optical triangulation



16 Frames = 1 ac



12-15 ac collected every seconds

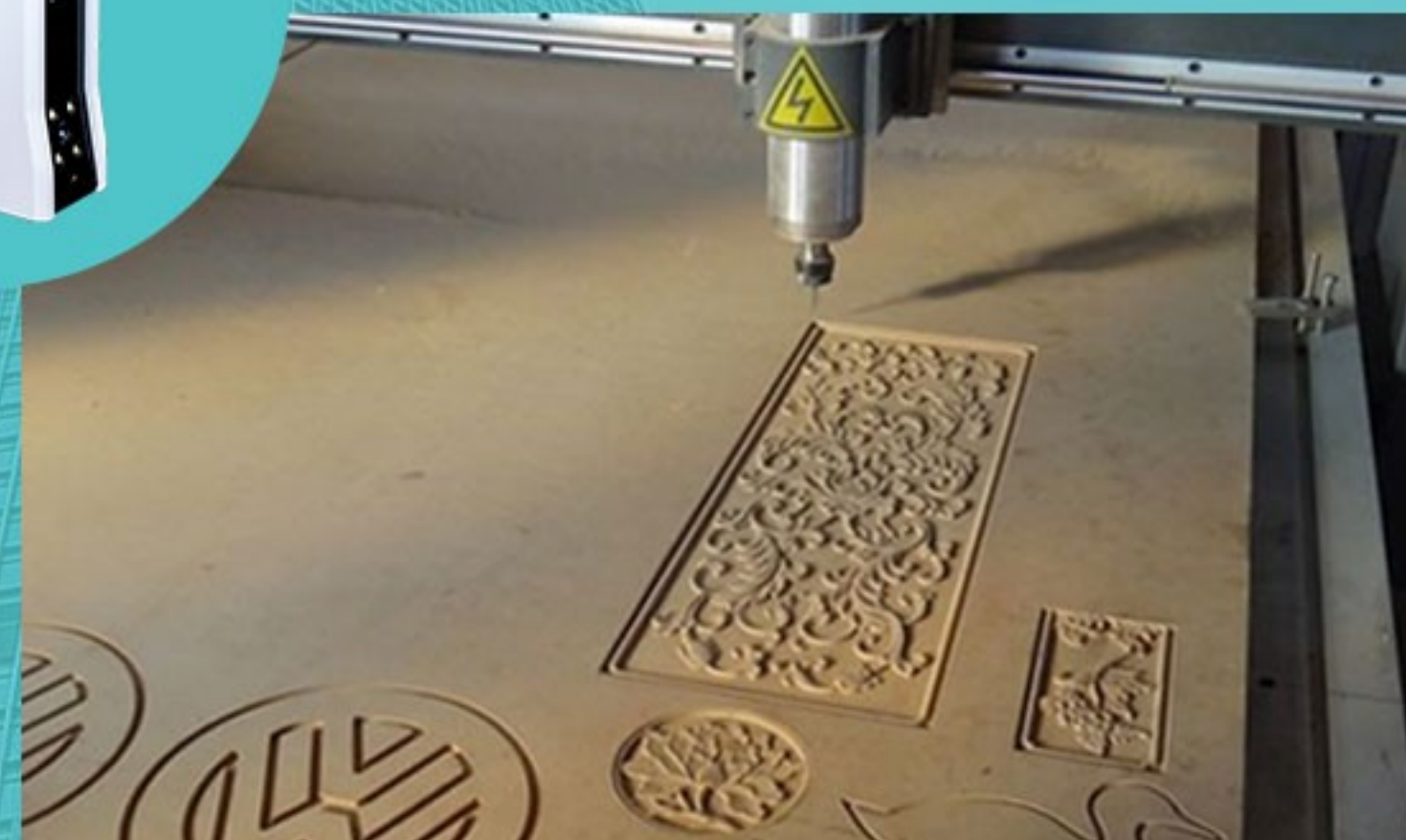
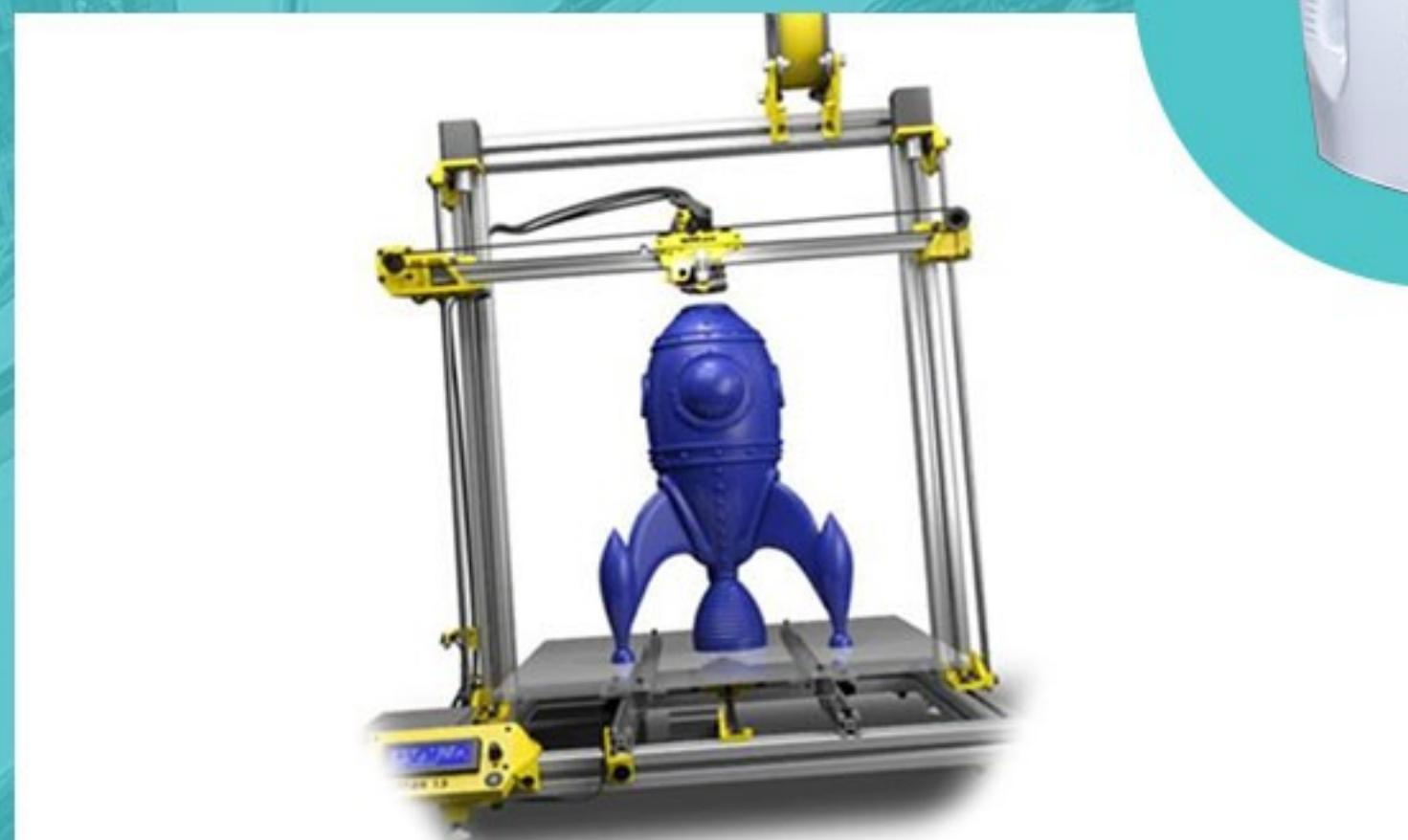


USB 3.0

Scanning Speed as **3,000,000** Points / S



# FISHER MONOCHROME APPLICATIONS





## ARCHER FULL COLOR APPLICATIONS



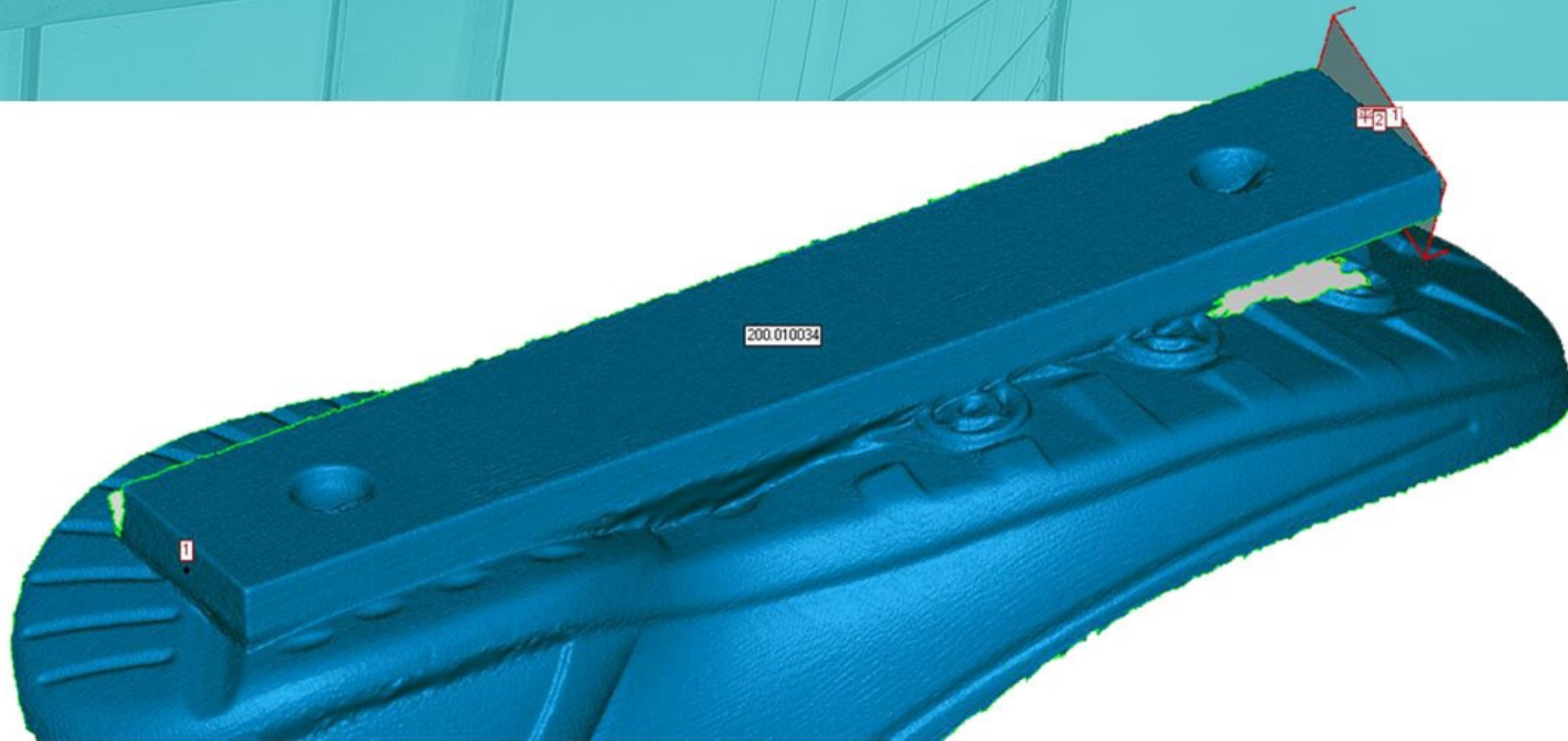
# ABOUT ACCURACY

Single frame accuracy: could be calculated by standard block, average result up to 0.04 mm

Volume frame accuracy: changable with target shape, size, brightness, measure software ect

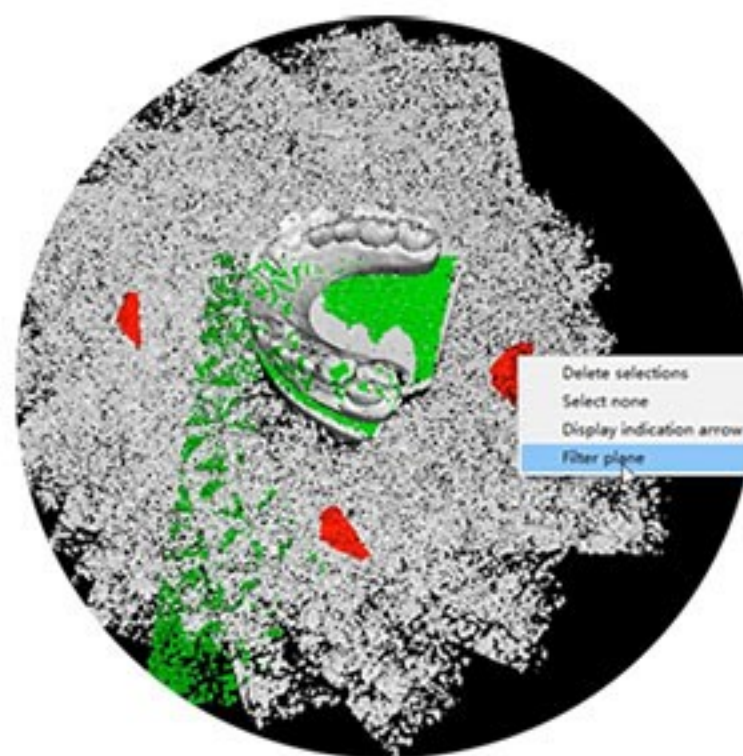
ensure  $< 0.8 \text{ mm} / M$  under frame alignment

all our scanners could work with Photogrammetry

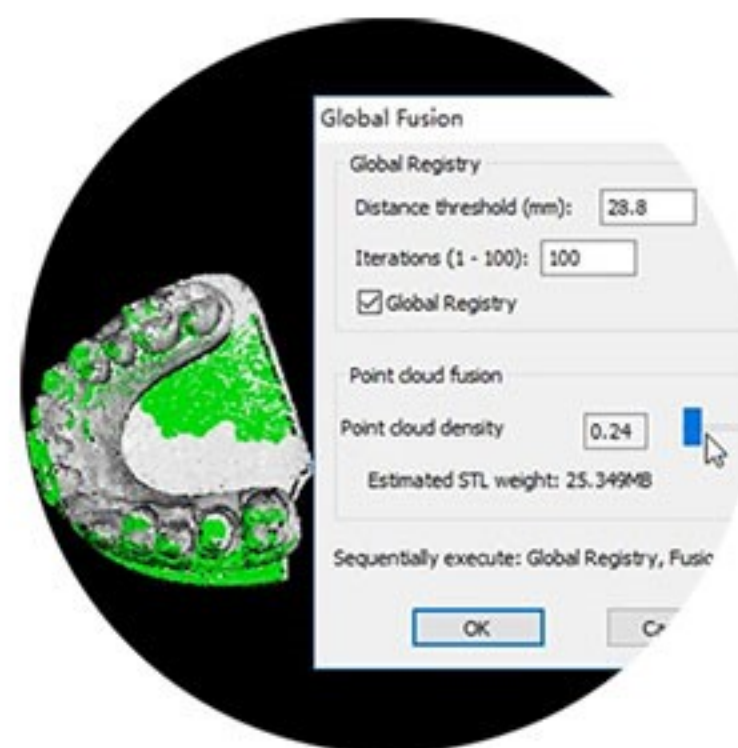




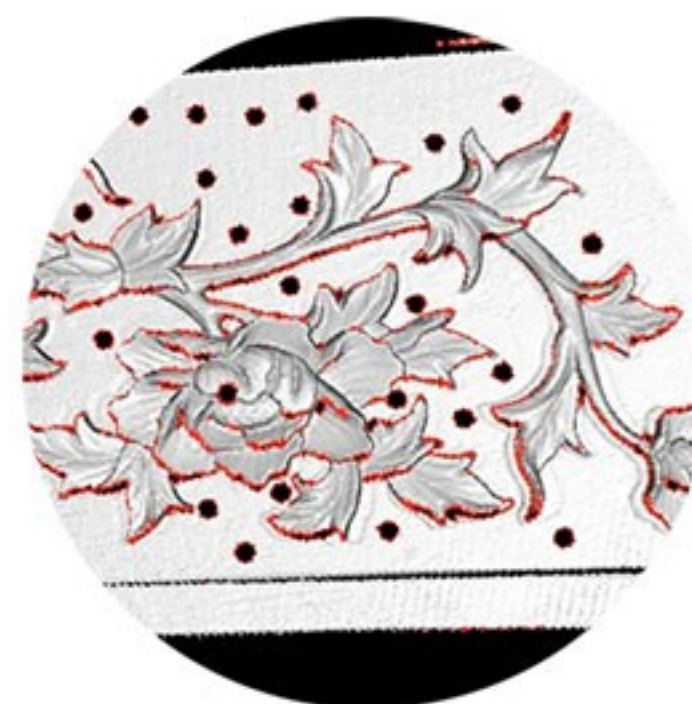
# SOFTWARE INFO



Filter plane



From ac to STL



After-Process



FOV Shift

# HIGH RESOLUTION UP 0.12MM



# OUR ADVANTAGES



Advantage 1: Real time optimize tracking



Advantage 2: Dual FOV, mobile scan tiny objects



Advantage 3: Full color module build inside



Advantage 4: All software is open free



Advantage 5: Up to 0.12mm resolution



### FEATURE ALIGNMENT



NEW PROJECT OPTION

Alignment:  Feature  Mark  Frame  Mix

Scan Mode:  Standard  Fine

Object surface:  Lighter  Common  Dark

### MIX ALIGNMENT



### MARK ALIGNMENT



Oversize mode

Texture

OK

### FRAME ALIGNMENT



Cancel

## Handheld HD Scan Specifications

	Industrial Monochrome			Full Color	
Item Model	FISHER	FISHER W	FISHER X	Archer S	Archer W
Camera	Monochrome, 1.3mp * 2			Monochrome, 1.3mp * 2 + Full color, 1.3mp*1	
Lens	16mm/5mp	12mm/5mp	8mm/5mp	16mm/5mp	12mm/5mp
Raster	DLP 1280*1080				
Resolution	0.1mm	0.2mm	0.5mm	0.1mm	0.2mm
Light Area	30*24cm; 12*10cm	40*32cm; 20*16cm	80*64cm; 40*32cm	30*24cm; 12*10cm	40*32cm; 20*16cm
Frame accuracy	0.04mm	0.1mm	0.2mm	0.05mm	0.1mm
Scan speed	3,000,000 points/S, 12-15 F/S				
Scan volume	5 -100cm	8-200cm	25 -500cm	5 -100cm	8-200cm
Texture	No			Yes	
Alignment	Feature align (support group register) Mix align Mark align Frame align				
Data format	ASC/STL			ASC/STL/PLY	
Photogrammetric	YES(option), volume accuracy within 0.1mm/M			NO	
Advantages	Accuracy preference	Scan big objects in high resolution	Fast scan super big object	Color restore for regular display	Best choice for Face/human scan
Public API	USB 3.0; C++ interface				
PC Require	Nvidia as main GPU; Win7 (64) and higher;				
Certification	CE/FCC/WEEE/CNAS				
Software	Fill holes; Decimate; Smoothen				
After process (option)	CAD /Scan importing; Point process (Register/Merge, Noise Delete /Noise Filtering) Polygon process ( Smooth/Decimate/Subdivide/Fill holes /Remove Markers / Scale Polygon Healing (Abnormal /Cross /etc)				

# PACKAGE

39CM \* 33CM \*16CM, 3.5 KG

